



Superior Marine Manifolds

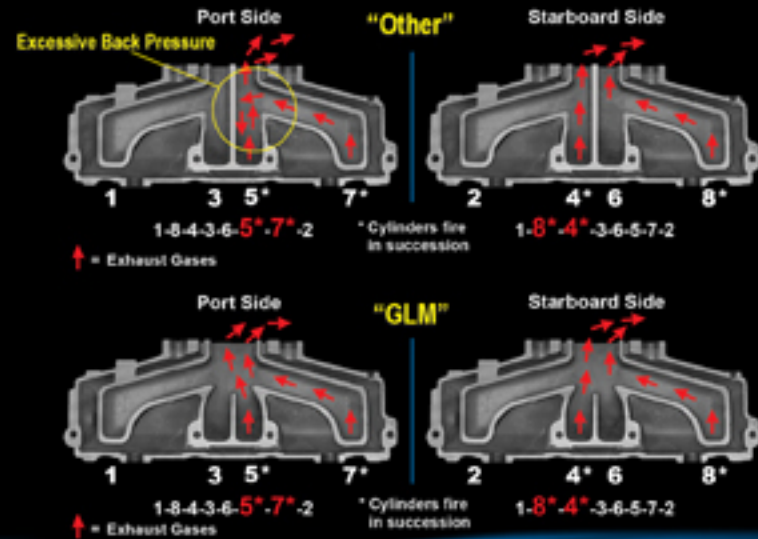
3YR
FOR CAST IRON MANIFOLDS
WARRANTY
2YR FOR ALUMINUM MANIFOLDS

100% Complete Sets
2 Manifolds
2 Elbow/Risers
All Gaskets
& Hardware



Increase Performance - Reduce Back Pressure
Add More Horsepower

Exhaust System Evaluation



V8 GM Small Block

Our fully tuned design guides exhaust gasses directly to riser without turbulence and back pressure. This increases the engines performance up to 10%. In the meantime, an additional 40% water cooling area will decrease the entire manifold body temperature significantly.

V8 GM Big Block

Our fully tuned design will reduce turbulence and enhance flow for added maximum performance. An extra 30% water cooling area will help reduce temperature in the exhaust exit area allowing for longer gasket life.



100% Complete Set
GM V6 Conversion Kit
No. 58992 \$ call for price
Cast Iron
No. 59992 \$ call for price
Aluminum



100% Complete Set
GM V8 Conversion Kit
No. 58990 \$ call for price
Cast Iron
No. 59990 \$ call for price
Aluminum



100% Complete Set
OMC V6 Conversion Kit
No. 58994 \$ call for price
Cast Iron



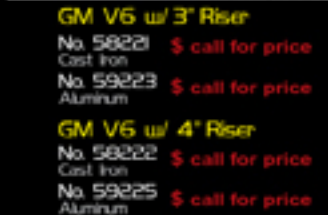
100% Complete Set
GM V6 w/ 3\"/>



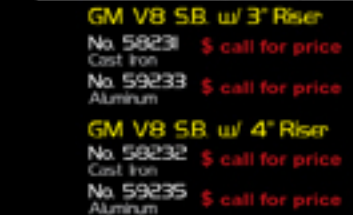
100% Complete Set
GM V8 SB w/ 3\"/>



100% Complete Set
GM V8 BB w/ 3\"/>



100% Complete Set
GM V6 w/ 4\"/>



100% Complete Set
GM V8 SB w/ 4\"/>



100% Complete Set
GM V8 BB w/ 4\"/>



100% Complete Set
OMC GM V8 SB
No. 58410 \$ call for price
Cast Iron



100% Complete Set
Volvo GM VG to 1993
No. 58640 \$ call for price
Cast Iron



100% Complete Set
Ford V8 302/351 Carb
No. 58490 \$ call for price
Cast Iron



100% Complete Set
Volvo GM V8 to 1993
No. 58630 \$ call for price
Cast Iron



100% Complete Set
OMC/Volvo GM V8 5.7L
No. 58430 \$ call for price
Cast Iron

100% Complete Set
Ford V8 302/351 EFI
No. 58491 \$ call for price
Cast Iron

Buy GLM Parts Here!

CALIFORNIA
CP Performance - Rossmore Park
707-585-5871
sales@cpperformance.com

FLORIDA
Bounty - N Ft. Myers
800-997-5881
bountymanhdsdistributors.com
ERW - Dana Beach
800-940-4379
marine@erwparts.com
Glenn Mar - Largo
800-282-023
glennmarine.com
Jemys Marine - Ft. Lauderdale
800-432-2231
jemysmarine.com

KANSAS
US Boatworks - Kansas City
913-342-001
boatengine.com

MASSACHUSETTS
Doug Russell - Worcester
508-791-497
dougrossell.com

NORTH CAROLINA
Basic Power - Harkers Island
252-504-3355
basicpower.com

NEW JERSEY
Jemys Marine - Lakewood
888-244-4735
jemysmarine.com
MESCO - Thornfare
856-853-8320
mesconet.com

NEW YORK
Lighthouse - Riverhead
631-722-5700
partman.com
Seacoast - Underhust
631-884-1003

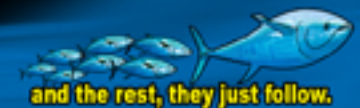
OHIO
Hem Marine - Fairfield
800-582-2798
hemmarine.com

OREGON
Cook Engine - Portland
503-289-8466
cookengine.com

SOUTH CAROLINA
Jemys Marine - Charleston
800-788-2231
jemysmarine.com

TEXAS
Palmer Power - Houston
800-364-4637
sales@palmerpower.com

WASHINGTON
Harbor Marine - Everett
425-259-3265
harbormarineparts.com



705 Los Angeles Ave., Monrovia, CA 91016
Tele (626) 357-0077, Fax (626) 357-0600
E-mail info@glmmarine.com

www.glmmarine.com

GLM[®]

GLM's Aluminum Anode Kits

REDUCE WASTE WITH GLM's LONGER LASTING ALUMINUM ANODES

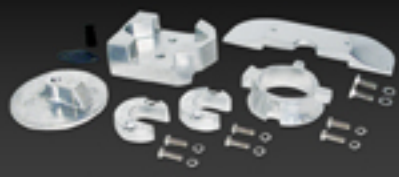
For Salt & Brackish Water



We use "Only the Best" Alloy Metals in the Aftermarket

Fe	0.12% max	Ti	0.025% max
Si	0.08% max	Others	0.02% max
Cu	0.01% max	Al	Balance
Zn	3.0-5.0%	Potential	1.05 volts
In	0.01-0.025%	Capacity	2680A-h/Kg

Aluminum Anode Kit All Alpha One Gen II



No. 2722 \$ call for price
OEM 888756001

Aluminum Anode Kit All Bravo I



No. 2724 \$ call for price
OEM 888756001

Aluminum Anode Kit Bravo II (1988 & Up) Bravo III (1995-2002)



No. 2725 \$ call for price
OEM 888756001

Aluminum Anode Kit MR / Alpha One (1984-1990)



No. 2754 \$ call for price
OEM 888756002

Aluminum Anode Kit Bravo III (2003 & Up)



No. 2891 \$ call for price
OEM 88876002

Aluminum Anode Kit Stringer (1978-1985)



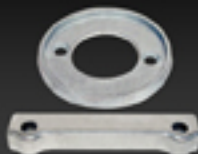
No. 2892 \$ call for price
OEM N/A

Aluminum Anode Kit Cobra (1985-1993)



No. 2893 \$ call for price
OEM N/A

Aluminum Anode Kit AQ250, 270, 270T, 275



No. 2895 \$ call for price
OEM N/A

Aluminum Anode Kit AQ280, 280T, 280PT



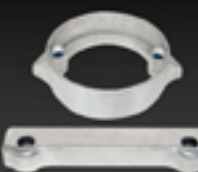
No. 2896 \$ call for price
OEM N/A

Aluminum Anode Kit AQ290, 290A



No. 2897 \$ call for price
OEM N/A

Aluminum Anode Kit AQ280DP



No. 2898 \$ call for price
OEM N/A

Aluminum Anode Kit AQ290DP



No. 2899 \$ call for price
OEM N/A

Buy GLM Parts Here!

CALIFORNIA
CP Performance - Robert Park
707-585-9871
sales@cpperformance.com

FLORIDA
Bounty - N. Ft. Myers
800-997-5881
bountymarineistributors.com
ERW - Dana Beach
800-940-4379
msmarine@erwparts.com
Glenn Mar - Largo
800-282-0223
glennmarmarine.com
Jenys Marine - Ft. Lauderdale
800-432-2231
jenysmarine.com

KANSAS
US Boatworks - Kansas City
913-342-0011
boatengines.com

MASSACHUSETTS
Doug Russell - Worcester
508-791-4917
dougussell.com

NORTH CAROLINA
Basic Power -arkers Island
252-504-3355
basicpower.com

NEW JERSEY
Jenys Marine - Lakewood
888-244-4735
jenysmarine.com
MESCO - Thornfare
856-853-8320
mesconet.com

NEW YORK
Lighthouse - Riverhead
631-722-5700
partman.com
Seacoast - Underhust
631-884-1013

OHIO
Hem Marine - Fairfield
800-582-2798
hemmarine.com

OREGON
Cook Engine - Portland
503-289-8466
cookengine.com

SOUTH CAROLINA
Jenys Marine - Charleston
800-788-2231
jenysmarine.com

TEXAS
Palmer Power - Houston
800-364-4637
sales.palmerpower@ordlink.net

WASHINGTON
Harbor Marine - Everett
425-259-3285
harbormarineparts.com



NEW! Clamshell Packaging

Hang, Stand, Stack or Pack with the Most Versatile Packaging in the Industry.



Anodes Brochure

Please visit www.glmmarine.com for our Anode Line!



and the rest, they just follow.



www.glmmarine.com

705 Los Angeles Ave., Monrovia, CA 91016
Tele (626) 357-0077, Fax (626) 357-0600
E-mail: info@glmmarine.com

www.glmmarine.com