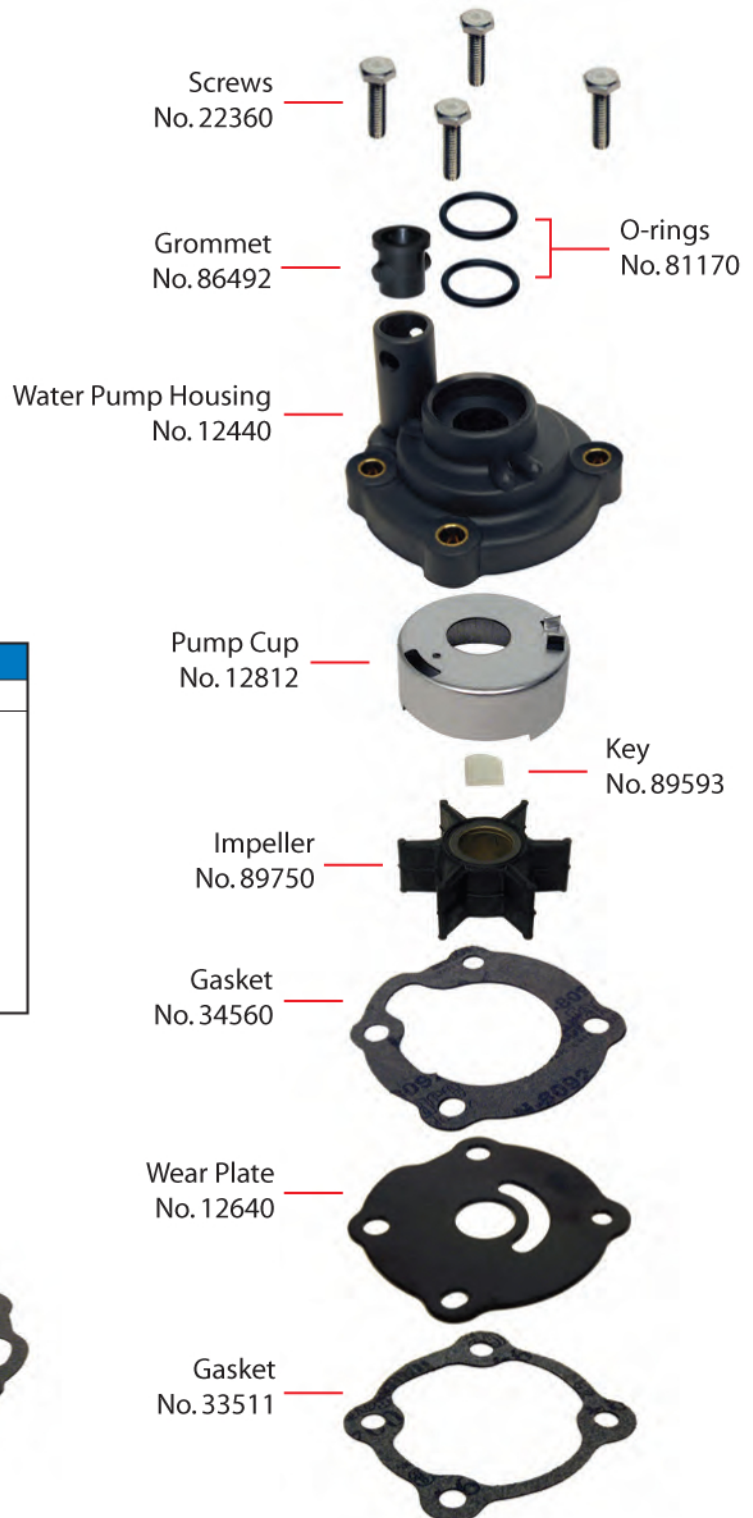


Instructions for 18, 25 & 28 HP 2-Cyl. Crossflow (with thru-cavitation plate exhaust & two-piece gearcase)

Complete Water Pump Kit No. 12060



GLM No. 12060 - Complete Water Pump Kit			
Qty.	Description	GLM	OEM
4	Screws	22360	324960
1	Grommet	86492	302497
1	Water Pump Housing	12440	330560
1	Pump Cup	12812	328751
2	O-ring	81170	301967
1	Impeller	89750	395289
1	Key	89593	330619
1	Gasket	34560	329390
1	Wear Plate	12640	329391
1	Gasket	33511	324449

