



www.glmmarine.com

Aluminium and Magnesium Anodes





www.glmmarine.com

*Why Change from Zinc to
Aluminum Anodes*

Pages 3-6

*Replacement Anodes for
Shaft Anodes*

Pages 7-9

*Replacement Anodes for
Donut Anodes*

Page 10

*Replacement Anodes for
Rudder Anodes*

Page 11

*Replacement Anodes for
Pencil Anodes & Plugs*

Pages 12-15

*Replacement Anodes for
MerCruiser*

Pages 16-20

*Replacement Anodes for
OMC/Volvo Penta*

Pages 21-25

*Replacement Anodes for
Johnson/Evinrude*

Pages 26-29

*Replacement Anodes for
Mercury/Mariner/Force*

Pages 30-32

*Replacement Anodes for
Yamaha*

Pages 33-35

*Replacement Anodes for
Suzuki*

Pages 36-37

*Replacement Anodes for
Honda*

Pages 38

Why Change from Zinc to Aluminum Anodes

Aluminum Anodes

Why the Change?



The Difference is Clear!



Aluminum anodes eliminate the layer that forms on zinc anodes which keeps them from working resulting in pre-mature replacement.



Aluminum anodes provide increased voltage potential for better protection.



Zinc anodes cause corrosion damage if used in salt, laden or polluted waters.



Zinc anodes over protect the drive and boil the paint off the surface.



Aluminum anodes are lighter and longer lasting than zinc anodes.

Why Change from Zinc to Aluminum Anodes

Why the Change?



Zinc anodes can be problematic when used in fresh water. Zinc hydroxide, an insulating layer of film, builds up and covers the zinc anodes causing failure in their corrosion protection.



GLM's aluminum anodes are 40% the weight of zinc anodes making your vessel's over all weight lighter, allowing better performance.



Aluminum anodes last up to 50% longer than zinc anodes due to the electrochemical capacity being 3x's greater than zinc's electrochemical capacity.



Aluminum has a high current capacity with a low driving potential per pound contributing to it's long life.



The electrochemical performance makes aluminum an ideal galvanic anode material for low resistivity environments such as salt and brackish waters.



Aluminum anodes are now the most widely used anode for cathodic protection of exposed metals to water.



Aluminum anodes self-clean in fresh water as well as activates again upon re-entry to the water after hull outs.



Although magnesium anodes are most popular for fresh water usage, aluminum anodes are suitable for all types of water making them the better choice for boats that travel in salt and fresh water.



Aluminum anodes are designed for optimum performance in a variety of temperature ranges and environmental conditions.



GLM cast our aluminum anodes in a variey of sizes and weights to accomodate all your cathodic protection needs.

Why Change from Zinc to Aluminum Anodes

Why the Change?

Zinc Anodes	Aluminum Anodes
355 Ampere hours per lb.	1225 Ampere hours per lb.
This means a Zinc anode will give one amp for 355 hours for every pound of zinc.	This means an Aluminum anode will give one amp for 1225 hours for every pound of aluminum.
A typical Z3 weighs 10.3 lbs.	A typical AZ3 weighs 5 lbs.
Total ampere hours 3656.	Total ampere hours 6125.
Assuming anode performs at .4 amp.	Assuming anode performs at .4 amp.
This anode will last for 9140 hours.	This anode will last for 15312 hours.
Which is 381 days.	Which is 638 days.
Which is 12.5 months.	Which is 19 months.

Aluminum Anodes...



High current capacity under a variety of conditions.



Current capacity maintenance with time.



Desireable operating potential.



Constant potential with time.



MerCruiser recommends the use of aluminum anodes on all their sterndrives after 2001.

Why Change from Zinc to Aluminum Anodes

GLM uses Only the Best Aluminum Alloys!

All aluminum anodes die cast designs are by GLM Products, Inc. U.S.A. GLM Products, Inc. uses only the best materials to make our anodes supplied by POLCOR (Environmental Protection Engineering S.A.)

POLCOR uses Al-Zn-In alloys proven to be the best after optimisation of the composition has been tested in University laboratories. The addition of Indium is a benefactor of aluminum acting as a depassivating agent making POLCOR materials the most reliable casting Aluminum on the market.



POLCOR

Fe	0.12% max
Si	0.08% max
Cu	0.01% max
Zn	3.0-5.0%
In	0.01-0.025%
Ti	.025% max
Others	0.02% max
Al	Balance
Potential -1.05 Volts	
Capacity 2680A-h/Kg	



Aluminum anodes are environmentally friendly.



Aluminum anodes are more active and provide better protection than zinc anodes.



Different types of anodes such as zinc and aluminum should never be mixed.

GLM's Aluminum Anodes are your BEST CHOICE for Cathodic Protection in Salt & Brackish Waters!

Replacement Anodes for Shaft Anodes

INCH SIZES



No. 26600
Aluminum Anode
OEM: N/A

Standard
ID: \varnothing 3/4"
OD: \varnothing 2-1/8"
H: 2"



No. 26601
Aluminum Anode
OEM: N/A

Standard
ID: \varnothing 7/8"
OD: \varnothing 2-1/8"
H: 2"



No. 26603
Aluminum Anode
OEM: N/A

Standard
ID: \varnothing 1"
OD: \varnothing 2-1/8"
H: 2"



No. 26605
Aluminum Anode
OEM: N/A

Standard
ID: \varnothing 1-1/8"
OD: \varnothing 2-1/8"
H: 2"



No. 26607
Aluminum Anode
OEM: N/A

Standard
ID: \varnothing 1-1/4"
OD: \varnothing 2-1/4"
H: 2-1/2"



No. 26608
Aluminum Anode
OEM: N/A

Heavy Duty
ID: \varnothing 1-1/4"
OD: \varnothing 2-1/2"
H: 2-5/8"



Replacement Anodes for Shaft Anodes



No. 26610
Aluminum Anode
OEM: N/A

Standard
ID: \varnothing 1-3/8" (35mm)
OD: \varnothing 2-1/2" (65mm)
H: 2-5/8" (67mm)



No. 26611
Aluminum Anode
OEM: N/A

Standard
ID: \varnothing 1-1/2"
OD: \varnothing 2-1/2"
H: 2-5/8"



No. 26613
Aluminum Anode
OEM: N/A

Standard
ID: \varnothing 1-3/4"
OD: \varnothing 3-1/4"
H: 2-3/4"



No. 26616
Aluminum Anode
OEM: N/A

Standard
ID: \varnothing 2"
OD: \varnothing 3-1/4"
H: 2-3/4"



No. 26618
Aluminum Anode
OEM: N/A

Standard
ID: \varnothing 2-1/4"
OD: \varnothing 4-1/4"
H: 3-3/4"



No. 26620
Aluminum Anode
OEM: N/A

Standard
ID: \varnothing 2-1/2"
OD: \varnothing 4-1/4"
H: 3-3/4"



Replacement Anodes for Shaft Anodes



No. 26622
Aluminum Anode
OEM: N/A

Standard
ID: \varnothing 2-3/4"
OD: \varnothing 4-3/4"
H: 3-5/8"



No. 26624
Aluminum Anode
OEM: N/A

Standard
ID: \varnothing 3"
OD: \varnothing 4-3/4"
H: 3-5/8"



METRIC SIZES (mm)



No. 26602
Aluminum Anode
OEM: N/A

Standard
ID: \varnothing 25mm
OD: \varnothing 54mm
H: 51mm



No. 26606
Aluminum Anode
OEM: N/A

Standard
ID: \varnothing 30mm
OD: \varnothing 64mm
H: 66mm



No. 26612
Aluminum Anode
OEM: N/A

Standard
ID: \varnothing 40mm
OD: \varnothing 89mm
H: 86mm

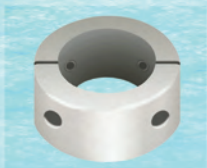


No. 26615
Aluminum Anode
OEM: N/A

Standard
ID: \varnothing 50mm
OD: \varnothing 89mm
H: 86mm



Replacement Anodes for Donut Anodes



No. 26661
Aluminum Anode

Shaft Size: 3/4"
Outside \varnothing : 2-1/8"
Thickness: 1"

No. 26662
Aluminum Anode

Shaft Size: 7/8"
Outside \varnothing : 2-1/8"
Thickness: 1"

No. 26663
Aluminum Anode

Shaft Size: 1"
Outside \varnothing : 2-1/2"
Thickness: 1-1/4"

No. 26664
Aluminum Anode

Shaft Size: 1-1/8"
Outside \varnothing : 2-1/2"
Thickness: 1-1/4"

No. 26665
Aluminum Anode

Shaft Size: 1-1/4"
Outside \varnothing : 2-1/2"
Thickness: 1-1/4"

No. 26666
Aluminum Anode

Shaft Size: 1-3/8"
Outside \varnothing : 3"
Thickness: 1-1/4"

No. 26667
Aluminum Anode

Shaft Size: 1-1/2"
Outside \varnothing : 3"
Thickness: 1-1/4"

No. 26668
Aluminum Anode

Shaft Size: 1-3/4"
Outside \varnothing : 3-1/2"
Thickness: 1-3/8"

No. 26669
Aluminum Anode

Shaft Size: 2"
Outside \varnothing : 3-1/2"
Thickness: 1-3/8"

No. 26670
Aluminum Anode

Shaft Size: 2-1/4"
Outside \varnothing : 3-1/2"
Thickness: 1-3/8"

No. 26671
Aluminum Anode

Shaft Size: 2-1/2"
Outside \varnothing : 5"
Thickness: 1-1/2"

No. 26672
Aluminum Anode

Shaft Size: 2-3/4"
Outside \varnothing : 5"
Thickness: 1-1/2"

No. 26673
Aluminum Anode

Shaft Size: 3"
Outside \varnothing : 5"
Thickness: 1-1/2"

No. 26674
Aluminum Anode

Shaft Size: 3-1/2"
Outside \varnothing : 6-1/2"
Thickness: 1-1/2"



Replacement Anodes for Rudder Anodes



No. 26650
Aluminum Anode
OEM: N/A

Standard
OD: \varnothing 1-7/8"
Thickness: 1/4"



No. 26651
Aluminum Anode
OEM: N/A

Standard
OD: \varnothing 2-13/16"
Thickness: 1/2"



No. 26652
Aluminum Anode
OEM: N/A

Standard
OD: \varnothing 3-3/4"
Thickness: 1/2"



No. 26654
Aluminum Anode
OEM: N/A

Standard
OD: \varnothing 5"
Thickness: 5/8"



No. 26655
Aluminum Anode
OEM: N/A

Standard
OD: \varnothing 5-1/8"
Thickness: 7/8"



No. 26656
Aluminum Anode
OEM: N/A

Standard
OD: \varnothing 6-1/2" to 7"
Thickness: 7/8"



Replacement Anodes for Pencil Anodes



No. 12919
Aluminum Pencil Anode Kit
Code: 00

Plug: 1/8"
Anode ø: 1/4"
Anode Length: 2"
Anode Thread: 1/4-20



No. 11961
Aluminum Pencil Anode
Without Plug



No. 12922
Aluminum Pencil Anode Kit
Code: 0

Plug: 1/4"
Anode ø: 3/8"
Anode Length: 1-3/4"
Anode Thread: 5/16-18



No. 11963
Aluminum Pencil Anode
Without Plug



No. 12923
Aluminum Pencil Anode Kit
Code: 0A

Plug: 1/4"
Anode ø: 3/8"
Anode Length: 2-1/2"
Anode Thread: 5/16-18



No. 11964
Aluminum Pencil Anode
Without Plug



No. 12924
Aluminum Pencil Anode Kit
Code: 0B

Plug: 1/4"
Anode ø: 3/8"
Anode Length: 3/4"
Anode Thread: 5/16-18



No. 11965
Aluminum Pencil Anode
Without Plug



No. 12925
Aluminum Pencil Anode Kit
Code: 1H

Plug: 3/8"
Anode ø: 3/8"
Anode Length: 2"
Anode Thread: 3/8-16



No. 11966
Aluminum Pencil Anode
Without Plug



No. 12926
Aluminum Pencil Anode Kit
Code: 0H

Plug: 3/8"
Anode ø: 1/2"
Anode Length: 1-5/8"
Anode Thread: 3/8-16



No. 11967
Aluminum Pencil Anode
Without Plug

Replacement Anodes for Pencil Anodes



No. 12927
Aluminum Pencil Anode Kit
Code: 1

Plug: 3/8"
Anode \varnothing : 1/2"
Anode Length: 2"
Anode Thread: 3/8-16



No. 11968
Aluminum Pencil Anode
Without Plug



No. 12928
Aluminum Pencil Anode Kit
Code: 1D

Plug: 3/8"
Anode \varnothing : 1/2"
Anode Length: 1-3/4"
Anode Thread: 3/8-16



No. 11969
Aluminum Pencil Anode
Without Plug



No. 12929
Aluminum Pencil Anode Kit
Code: 1E

Plug: 3/8"
Anode \varnothing : 1/2"
Anode Length: 1-1/2"
Anode Thread: 3/8-16



No. 11970
Aluminum Pencil Anode
Without Plug



No. 12931
Aluminum Pencil Anode Kit
Code: 1F

Plug: 3/8"
Anode \varnothing : 1/2"
Anode Length: 1-1/4"
Anode Thread: 3/8-16



No. 11971
Aluminum Pencil Anode
Without Plug



No. 12932
Aluminum Pencil Anode Kit
Code: 1G

Plug: 3/8"
Anode \varnothing : 1/2"
Anode Length: 1"
Anode Thread: 3/8-16



No. 11972
Aluminum Pencil Anode
Without Plug



No. 12934
Aluminum Pencil Anode Kit
Code: 2

Plug: 1/2"
Anode \varnothing : 5/8"
Anode Length: 2"
Anode Thread: 7/16-14



No. 11974
Aluminum Pencil Anode
Without Plug

Replacement Anodes for Pencil Anodes & Plugs



No. 12935
Aluminum Pencil Anode Kit
Code: 2A

Plug: 1/2"
Anode ø: 5/8"
Anode Length: 1-1/4"
Anode Thread: 7/16-14



No. 12936
Aluminum Pencil Anode Kit
Code: 2B

Plug: 1/2"
Anode ø: 5/8"
Anode Length: 3"
Anode Thread: 7/16-14



No. 12937
Aluminum Pencil Anode Kit
Code: 2C

Plug: 1/2"
Anode ø: 5/8"
Anode Length: 1-5/8"
Anode Thread: 7/16-14



No. 12939
Aluminum Pencil Anode Kit
Code: 3

Plug: 3/4"
Anode ø: 3/4"
Anode Length: 2"
Anode Thread: 1/2-13



No. 12691
Aluminum Pencil Anode Kit
Code: 3A

Plug: 3/4"
Anode ø: 3/4"
Anode Length: 3/4"
Anode Thread: 1/2-13



No. 12942
Aluminum Pencil Anode Kit
Code: 4

Plug: 3/4"
Anode ø: 3/4"
Anode Length: 3-3/8"
Anode Thread: 1/2-13



No. 11975
Aluminum Pencil Anode
Without Plug

No. 11976
Aluminum Pencil Anode
Without Plug

No. 11977
Aluminum Pencil Anode
Without Plug

No. 11979
Aluminum Pencil Anode
Without Plug

No. 11981
Aluminum Pencil Anode
Without Plug

Replacement Anodes for Pencil Anodes & Plugs



No. 12943
Aluminum Pencil Anode Kit
Code: 5

Plug: 3/4"
Anode \varnothing : 3/4"
Anode Length: 3-5/8"
Anode Thread: 1/2-13



No. 11982
Aluminum Pencil Anode
Without Plug



No. 12693
Aluminum Pencil Anode Kit

Plug: 3/4"
Anode \varnothing : 3/4"
Anode Length: 1-1/2"
Anode Thread: 1/2-13



No. 12694
Aluminum Pencil Anode
Without Plug



No. 12946
Aluminum Pencil Anode Kit
Code: 7

Plug: 1"
Anode \varnothing : 1-1/16"
Anode Length: 5"
Anode Thread: 3/4-10



No. 11985
Aluminum Pencil Anode
Without Plug



No. 21881
Brass Plug

N.P.T.: 1/8"
Anode Thread: 1/4-20

No. 21882
Brass Plug

N.P.T.: 1/4"
Anode Thread: 5/16-18

No. 21883
Brass Plug

N.P.T.: 3/8"
Anode Thread: 3/8-16

No. 21871
Brass Plug

N.P.T.: 1/2"
Anode Thread: 7/16-14

No. 21895
Brass Plug

N.P.T.: 3/4"
Anode Thread: 1/2-13

No. 21873
Brass Plug

N.P.T.: 1"
Anode Thread: 3/4-10



No. 12789
Aluminum Anode
OEM: 838929

For Volvo Use Only
For Diesel Engine,
MD19, 21, 27, 29,
32, AQ30, 31, 40, 41



Replacement Anodes for MerCruiser



No. 12672
Aluminum Anode Kit
OEM: N/A

Mounts on MR /
Alpha One (1984-1990)
Trim Cylinder



No. 12754
Aluminum Anode Kit
OEM: 888756Q02

For All MR /
Alpha One
(1984-1990)



No. 12722
Aluminum Anode Kit
OEM: 888756Q03

For All Alpha One
Gen II Drives



No. 12724
Aluminum Anode Kit
OEM: 888758Q01

For All Bravo I
Drives



No. 12726
Aluminum Anode Kit
OEM: 888761Q03

For All Bravo II
(1988 & Up)
& Bravo III
(1995-2002)



No. 12891
Aluminum Anode Kit
OEM: 888761Q04

For Bravo III
(2003 & Up)



No. 12890
Magnesium Anode Kit
OEM: 888760Q04

Replacement Anodes for MerCruiser



No. 12711
Aluminum Anode
OEM: 821629Q1

For Alpha One
Gen II



No. 12751
Magnesium Anode
OEM: 821629A2



No. 12712
Aluminum Anode
OEM: 821630Q1

For All Bravo



No. 12752
Magnesium Anode
OEM: 821630A2



No. 12670
Aluminum Anode
OEM: 31640Q4

For R / MR /
Alpha One
Trim Tabs

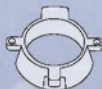


No. 12671
Magnesium Anode
OEM: 31640T6



No. 12702
Aluminum Anode
OEM: 806105Q1

Mounts on
Alpha One Gen II
Prop Shaft Carriers



No. 12755
Magnesium Anode
OEM: 806105A2



No. 12703
Aluminum Anode
OEM: 806189Q1

Mounts on
Alpha One Gen II
Trim Cylinder



No. 12715
Magnesium Anode
OEM: 806189A2



No. 12704
Aluminum Anode
OEM: 806190Q1

Mounts on All
Bravo & Blackhawk
Trim Cylinders



No. 12714
Magnesium Anode
OEM: 806190A2

Replacement Anodes for MerCruiser



No. 12713
Aluminum Anode
OEM: 821631Q1

No. 12749
Magnesium Anode
OEM: 821631T3

Mounts on
Transom



No. 12750
Aluminum Anode
OEM: 34762A1

No. 12917
Magnesium Anode
OEM: N/A

Anodic Plate



No. 12700
Aluminum Anode
OEM: 55989Q9

No. 12735
Magnesium Anode
OEM: 55989T3

Mounts on
Transom



No. 12740
Aluminum Anode
OEM: 34127T2

No. N/A
Magnesium Anode
OEM: N/A

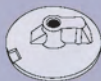
Long Length
Trim Tab



No. 12710
Aluminum Anode
OEM: 76214Q5

No. 12716
Magnesium Anode
OEM: 76214A6

For Alpha One
Gen II & All Bravo
Trim Tab - Flat



No. 12734
Aluminum Anode
OEM: 76214-4

No. 12916
Magnesium Anode
OEM: N/A

For Bravo III
(2003 & Up)
Trim Tab - Flat



Replacement Anodes for MerCruiser



No. 12727

A: Prop Nut Anode Kit
OEM: 809658A1

No. 12901

M: Prop Nut Anode Kit
OEM: N/A

Shaft Size: 3/4"
Thread: 1/2 NC 13



No. 12706

A: Prop Nut Anode Kit
OEM: 809660A1

No. 12902

M: Prop Nut Anode Kit
OEM: N/A

Shaft Size: 7/8"
Thread: 5/8 NC 11



No. 12717

A: Prop Nut Anode Kit
OEM: 809662A1

No. 12903

M: Prop Nut Anode Kit
OEM: N/A

Shaft Size: 1"
Thread: 3/4 NC 10



No. 12718

A: Prop Nut Anode Kit
OEM: 809664A1

No. 12904

M: Prop Nut Anode Kit
OEM: N/A

Shaft Size: 1-1/8"
Thread: 3/4 NF 16



No. 12708

A: Prop Nut Anode Kit
OEM: 809666A1

No. 12905

M: Prop Nut Anode Kit
OEM: N/A

Shaft Size: 1-1/4"
Thread: 7/8 NC 9



No. 12729

A: Prop Nut Anode Kit
OEM: 809668A1

No. 12906

M: Prop Nut Anode Kit
OEM: N/A

Shaft Size: 1-1/4"
Thread: 7/8 NF 14



Replacement Anodes for MerCruiser



No. 12728
Aluminum Anode
OEM: 809658

For Kit No. 12727
For Kit No. 12901
ø 1-1/4" x 1-1/2" L



No. 12705
Aluminum Anode
OEM: 809660

For Kit No. 12706
For Kit No. 12902
ø 1-5/8" x 2" L



No. 12707
Aluminum Anode
OEM: 809662T

For Kit No. 12717
For Kit No. 12718
For Kit No. 12903
For Kit No. 12904
ø 2" x 2-5/8" L



No. 12758
Aluminum Anode
OEM: 809666T

For Kit No. 12708
For Kit No. 12729
For Kit No. 12905
For Kit No. 12906
ø 2-5/16" x 3" L



No. 12765
Aluminum Anode
OEM: 865182A01

For Kit No. 12891
For Kit No. 12890
ø 2-1/8" x 2-3/8" L



No. 12756
Aluminum Anode
OEM: 806188A1

Mounts on Bravo
Prop Shaft Carrier

No. 12757
Magnesium Anode
OEM: 806188A2



Replacement Anodes for OMC/Volvo Penta



No. 12892
Aluminum Anode Kit
OEM: N/A

For Stringer
(1978-1985)



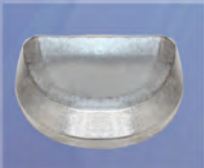
No. 12893
Aluminum Anode Kit
OEM: N/A

For Cobra
(1986-1993)



No. 12773
Aluminum Anode
OEM: 983494

For Stringer
(1984-1985)
For Cobra
(1986)



No. 12774
Aluminum Anode
OEM: 3853818

For Cobra
(1987-1994)



No. 12776
Aluminum Anode
OEM: 436745

For Stringer
(1982-1985)
For Cobra except
460 (1986-1993)



No. 12737
Aluminum Anode
OEM: 431708

For Cobra
(1986-1993)



Replacement Anodes for OMC/Volvo Penta



No. 12683
Aluminum Anode
OEM: 397768

For 460 Cobra
(1987-1989)



No. 12772
Aluminum Anode
OEM: 982438

For Stringer
(1975-1985)



No. 12775
Aluminum Anode
OEM: 984547

For Cobra
(1986-1989)



No. 12698
Aluminum Anode
OEM: 3853930

For Cobra
(1990-1993)



No. 12699
Aluminum Anode
OEM: 3854130

For Cobra
(1994-1998)



No. 12682
Aluminum Anode
OEM: 3854061

For King Cobra
(1990-1995)



Replacement Anodes for OMC/Volvo Penta



No. 12894
Aluminum Anode Kit
OEM: N/A

For AQ200



No. 12895
Aluminum Anode Kit
OEM: N/A

For AQ250, 270
270T, 275



No. 12896
Aluminum Anode Kit
OEM: N/A

For AQ280, 280T
280PT



No. 12897
Aluminum Anode Kit
OEM: N/A

For AQ290, 290A



No. 12898
Aluminum Anode Kit
OEM: N/A

For AQ280DP



No. 12899
Aluminum Anode Kit
OEM: N/A

For AQ290DP



Replacement Anodes for OMC/Volvo Penta



No. 12788
Aluminum Anode
OEM: 875821

For AQ280DP,
290DP



No. 12787
Aluminum Anode
OEM: 875815

For AQ280, 280T,
280PT, 290, 290A



No. 12784
Aluminum Anode
OEM: 875805

For AQ250, 270
270T, 275



No. 12785
Aluminum Anode
OEM: 875809

For AQ200



No. 12781
Aluminum Anode
OEM: 876286

For AQ120S,
120 SB



No. 12777
Aluminum Anode
OEM: 3855411

For Volvo Cobra
SX, DP-S/SI



Replacement Anodes for OMC/Volvo Penta



No. 12786
Aluminum Anode
OEM: 875812

For AQ110S



No. 12778
Aluminum Anode
OEM: 872793

For 290, 290DP,
DP-X



No. 12782
Aluminum Anode
OEM: 852835

For AQ290,
290DP



No. 12780
Aluminum Anode
OEM: 832598

For AQ200, 250
270, 275, 280
280DP



No. 12681
Aluminum Anode
OEM: 3852970

For Cobra
(1994-1998)
For King Cobra
(1990-1995)



No. 12854
Aluminum Anode
OEM: 873395

For DPX



Replacement Anodes for Johnson/Evinrude



No. 12695
Aluminum Anode Kit
OEM: 392461

No. 12684
Magnesium Anode Kit
OEM: N/A

For 50-75 HP
(1982-1984) Except
55 & 65 Commercial



No. 12696
Aluminum Anode Kit
OEM: 392160

No. 12685
Magnesium Anode Kit
OEM: N/A

For V4 & V6
(1982-1986)



No. 12697
Aluminum Anode Kit
OEM: 434029

No. 12769
Magnesium Anode Kit
OEM: N/A

For 20-35 HP
(1991 & Up)



No. 12736
Aluminum Anode
OEM: 433458

No. 12677
Magnesium Anode
OEM: N/A

Midsection for
3-Cyl. V8
(1985 & Up)



No. 12738
Aluminum Anode
OEM: 392462

No. 12686
Magnesium Anode
OEM: N/A

For 55-75 HP
(1985-2001)



No. 12776
Aluminum Anode
OEM: 436745

No. 12689
Magnesium Anode
OEM: N/A

For V4 & V6
(1982 & Up)



Replacement Anodes for Johnson/Evinrude



No.12733
Aluminum Anode
OEM: 392133

For V4 & V6
(1982-1986)



No.12730
Aluminum Anode
OEM: 173029

For All Outboards



No.12742
Aluminum Anode
OEM: 398873

For 40-50 HP
(1989 & Up)



No.12739
Aluminum Anode
OEM: 433580

For 3-Cyl. V6
(1991 & Up)



No.12762
Aluminum Anode
OEM: 338635

For 4-Stroke
9.9-15 HP
(1995-2001)



No.12737
Aluminum Anode
OEM: 431708

For 40 HP V8
(1988-1991)



No. 12766
Magnesium Anode
OEM: N/A

Replacement Anodes for Johnson/Evinrude



No. 12683
Aluminum Anode
OEM: 397768

For 155 HP
(1987-1990)
For 250 HP
(1991-1998)



No. 12761
Aluminum Anode
OEM: 432397

For 4, 6, 8 HP
(1985-1990)



No. N/A
Aluminum Anode
OEM: N/A

For 4-Stroke
40-50 HP
(2004 & Up)



No. N/A
Aluminum Anode
OEM: N/A

For 4-Stroke
60, 70, 90, 115,
140 HP (2004 & Up)

No. 12779
Magnesium Anode
OEM: 5034522



Replacement Anodes for Johnson/Evinrude



No. 12727

A: Prop Nut Anode Kit
OEM: N/A

No. 12901

M: Prop Nut Anode Kit
OEM: N/A



No. 12706

A: Prop Nut Anode Kit
OEM: N/A

No. 12902

M: Prop Nut Anode Kit
OEM: N/A



No. 12718

A: Prop Nut Anode Kit
OEM: N/A

No. 12904

M: Prop Nut Anode Kit
OEM: N/A



No. 12728

Aluminum Anode
OEM: N/A

No. 12911

Magnesium Anode
OEM: N/A



No. 12705

Aluminum Anode
OEM: N/A

No. 12912

Magnesium Anode
OEM: N/A



No. 12707

Aluminum Anode
OEM: N/A

No. 12913

Magnesium Anode
OEM: N/A

Shaft Size: 3/4"
Thread: 1/2 NC 13



Shaft Size: 7/8"
Thread: 5/8 NC 11



Shaft Size: 1-1/8"
Thread: 3/4 NF 16



For Kit No. 12727
For Kit No. 12901
ø 1-1/4" x 1-1/2" L



For Kit No. 12706
For Kit No. 12902
ø 1-5/8" x 2" L



For Kit No. 12718
For Kit No. 12904
ø 2" x 2-5/8" L



Replacement Anodes for Mercury/Mariner/Force



No. 12670
Aluminum Anode
OEM: 31640Q4

For Applications See
Merc/Mar/Force
Catalog



No. 12710
Aluminum Anode
OEM: 76214Q5

For Applications See
Merc/Mar/Force
Catalog



No. 12907
Aluminum Anode
OEM: 42121A2

For Applications See
Merc/Mar/Force
Catalog



No. 12908
Aluminum Anode
OEM: 98432T6

For Applications See
Merc/Mar/Force
Catalog



No. 12690
Aluminum Anode
OEM: 818298Q1

For Applications See
Merc/Mar/Force
Catalog



No. 12720
Aluminum Anode
OEM: 89949A1

For Applications See
Merc/Mar/Force
Catalog



No. N/A
Magnesium Anode
OEM: N/A

Replacement Anodes for Mercury/Mariner/Force



No. 12918
Aluminum Anode
OEM: 825271-1

For Applications See
Merc/Mar/Force
Catalog



No. 12680
Aluminum Anode
OEM: 822777Q1

For Applications See
Merc/Mar/Force
Catalog



No. 12675
Aluminum Anode
OEM: 826134Q

For Applications See
Merc/Mar/Force
Catalog



No. 12676
Aluminum Anode
OEM: 822157T2

For Applications See
Merc/Mar/Force
Catalog



Replacement Anodes for Mercury/Mariner/Force



No. 12706

A: Prop Nut Anode Kit
OEM: 809660A1

Shaft Size: 7/8"
Thread: 5/8 NC 11



No. 12717

A: Prop Nut Anode Kit
OEM: 809662A1

Shaft Size: 1"
Thread: 3/4 NC 10



No. 12718

A: Prop Nut Anode Kit
OEM: 809664A1

Shaft Size: 1-1/8"
Thread: 3/4 NF 16



No. 12705

Aluminum Anode
OEM: 809660

For Kit No. 12706
ø 1-5/8" x 2" L



No. 12707

Aluminum Anode
OEM: 809662T

For Kit No. 12717
For Kit No. 12718
ø 2" x 2-5/8" L



Replacement Anodes for Yamaha



No. 12743
Aluminum Anode
OEM: 664-45371-01

For 20-50 HP



No. 12744
Aluminum Anode
OEM: 6E5-45371-01

For 115, 130 HP
V6



No. 12881
Aluminum Anode
OEM: 688-45371-02

For 60, 70, 90 HP (1984-Up)
C60, C75, C85, C90 HP
(1994-01)
E60, E75, F50, P60, P75
T50 HP



No. 12882
Aluminum Anode
OEM: 6E5-45251-00

For 40-90 HP



No. 12886
Aluminum Anode
OEM: 688-45251-01

For 40-90 HP



No. 12885
Aluminum Anode
OEM: 6G5-45251-02

For 115-225 HP



Replacement Anodes for Yamaha



No. 12884
Aluminum Anode
OEM: 6H1-45251-02

For 40-90 HP



No. 12841
Aluminum Anode
OEM: 6T5-45371-00

For V6/V8 DR, DL
(1989-90)
For L4 DR (1990)
For 90, 100, 115 HP



No. 12748
Aluminum Anode
OEM: 6E0-45251-11

For 4.5 HP



No. 12842
Aluminum Anode
OEM: 61A-45371-00

For 200, 225, 250



No. 12843
Aluminum Anode
OEM: 6K1-45371-02

For 120, 200 HP
Counter Rotation



No. 12844
Aluminum Anode
OEM: 61N-45251-01

For F25, C30 HP



Replacement Anodes for Yamaha



No. 12845
Aluminum Anode
OEM: 67C-45371-00

For 80-100 HP



No. 12883
Aluminum Anode
OEM: 6J9-45371-00

For 150 HP



No. 12745
Aluminum Anode
OEM: 6K1-45371-00

For 150, 200 HP

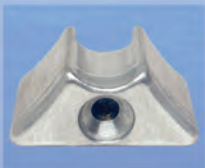


Replacement Anodes for Suzuki



No. 12846
Aluminum Anode
OEM: 11130-94600

For DF60/70
(1998-2003)
For DT5-175
(1983-2006)



No. 12847
Aluminum Anode
OEM: 11281-87D00

For DT75-225
(1986-2003)



No. 12848
Aluminum Anode
OEM: 41810-87D00

For DT90-225
(1986-2003)



No. 12849
Aluminum Anode
OEM: 55120-87801

For DT150-225
(1986-2003)



No. 12855
Aluminum Anode
OEM: 55125-95500

For DF40/50
(1999-2006)
For DT40-85
(1983-2000)



No. 12856
Aluminum Anode
OEM: 55125-96310

For DF25/30
(2000-2003)
For DT20-35
(1983-2000)

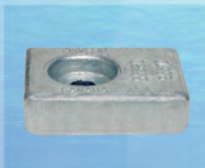


Replacement Anodes for Suzuki



No. 12857
Aluminum Anode
OEM: 55320-94900

For DF60-250
(2001-2006)
For DT115/140
(1996-2001)



No. 12887
Aluminum Anode
OEM: 55320-95310

For DF9.9-250
(1997-2006)
For DT4-225
(1983-2006)



Replacement Anodes for Honda



No. 12858
Aluminum Anode
OEM: 12155-ZV5-000

Mounts inside water passages on both intake and exhaust side.



No. 12675
Aluminum Anode
OEM: 41109-ZW1-003

Mounts on each side of extension case.



No. 12859
Aluminum Anode
OEM: 06411-ZW1-000

Mounts on bottom stern bracket.



No. 12861
Aluminum Anode
OEM: 41109-ZW1-B00

Mounts on each side of extension case



No. 12670
Aluminum Anode
OEM: 41107-ZW1-003ZA

For BF75-BF90 HP



No. 12748
Aluminum Anode
OEM: 41106-935-812

For 4-5 HP



No. 12743
Aluminum Anode
OEM: 41107-ZV5-000

For 20-50 HP



And the rest...



... they just follow.



GLM. The Leader of the
Aftermarket Marine Industry.



www.glmmarine.com

705 Los Angeles Ave., Monrovia, CA 91016 USA

TEL (626) 357-0077, FAX (626) 357-0600

info@glmmarine.com



\$1.00 USD
GAN07V1